



NORCEMOG NEWS

NORTH WEST AND CHESHIRE

April 2020

Hi all, last month I started by saying that I hoped you were surviving the weather storms & floods, this month I send my good wishes that you are staying strong and safe against the Coronavirus Covid-19. These are very strange times; I have never experienced anything like this before. I am working from home and staying safe as per our governments instructions and feel like I am in the 1993 film “Groundhog Day”. Who would’ve thought I would miss grocery shopping! Well as you will probably already know a lot of our events have either been cancelled or postponed, so I have updated the details below and I have also included a message from our lovely Secretary Andrew. For a little bit of light reading we also have a fabulous article from our fellow members Francesca and Neil who are in lockdown in New Zealand, this is well worth a read and there are wonderful pictures too!

Enjoy your read and don’t forget if you have any stories to share or pictures to show, of how you are spending this crazy time, with your beloved, I imagine very pristine Morgan, please send them through for next month’s edition, please stay strong and safe.

.....
NORCEMOG REGALIA – Isobel Moore 01253 738201
.....

Corona Virus – Northern Centre

Dear Members,

We hope we find you in good health and staying safe during the current UK lock down to limit the spread of Covid 19. Yes, I have had to add ‘Covid’ to the dictionary for Microsoft Word!

Never, in the history of mankind, has the NorceMog monthly newsletter been so eagerly anticipated by a readership so desperate for something new to read! Our thanks to Amanda if she has managed to issue an April copy!

Needless to say we have had to cancel all the planned Noggins for the foreseeable future. Attractions have shut down, Pubs are closed, Motorsport UK are not issuing any licences until at least the end of June (and unlikely to then!) and the best we can hope for is the possibility of Oulton Park Gold Cup at end of August – who knows in these unprecedented times?

Perhaps our first event for the re-launch of our Noggins should be a Concours. As many of our members enjoy retirement what else is there to do but prepare the Morgan for its first outing post virus?

Personally, Joan has the shiniest Ford Fiesta in Cheshire, if not the world, the grass is cut, the path power washed, greenhouse tidied, the courtyard has been treated with moss cleaner and we've only been isolated for 5 days! I bought some fuel (pre-lock down!) and 'paid at the pump' using the phone app, now getting lottery tickets through Direct debit and ordered bird food on-line instead of going to the local mill – yes, The times they are a changing!

Take care and stay safe everybody and we hope to meet up again in the not too distant future.

Andrew

Morgan Sports Car Club – The National Committee

A brief article, primarily for newer members describing what the National Committee is and does.

The full Committee is comprised of the elected Directors of Morgan Sports Car Club and the Centre Secretaries from each recognised Centre. The Directors are elected at the MSCC AGM, will normally serve a 2 year period (or sentence perhaps!) and includes the positions of Chairman, Vice Chairman, Past Chairman, Treasurer etc. There will always be at least 1 director up to a maximum of 7.

The National Committee meet at least once per year and whilst Centre Secretaries are invited, any member of MSCC is welcome to attend. Notes and reports are issued to Centre Secretaries in advance of the meeting so that the 17 items of the agenda are usually completed within 5 hours including a break for lunch!

This meeting will also consider any matters pertaining to the running of the MSCC e.g. concerns of Child Protection, risk assessments required at events or location / organisation of the annual Mog Meeting etc. When a new director is to be appointed, they will often make a presentation to this committee who will vote as to whether the candidate should be put forward to the AGM for consideration.

In addition to the National Committee Meetings and MSCC AGM there is a sub-committee meeting, the FEGP (Finance, Employment and General Purpose) comprising of the Directors and associated functions to ensure the club is run effectively. The other attendees include Club Manager, Miscellany editor, Motor Sports Lead, Centre Secretary co-ordinator etc.

The full articles of Association are available on the MSCC web site at this link -

[https://staging.morgansportscarclub.com/uploads/files/MSCC%20articles%20130419\(1\).pdf](https://staging.morgansportscarclub.com/uploads/files/MSCC%20articles%20130419(1).pdf)

You will need to Log-in to the members section for access.

Should you wish to attend an NCM meeting please email me on norcemog.sec@morgansportscarclub.com and I will forward on the reams of documentation! The next meeting is scheduled for 13th September 2020 at Nettle Hill Conference Centre near Coventry – Corona virus permitting!

Andrew Threlkeld
Centre Secretary – Northern Centre

NorceMog Contact details.

Please note that from mid-April I will be using the new Centre Secretary email address, norcemog.sec@morgansportscarclub.com to communicate updates. Please add this address to your 'safe recipients' to avoid emails being diverted to your Spam / Junk box.

I will still have access to norcemog@gmail.com and I will issue reminders of the new email address should you still use this one.

Thanks - Andrew

A piece from Neil McArthur written in “solitary” during the New Zealand lockdown.

Scenic Run with a Difference

Just before Francesca and I set off for a two month tour of New Zealand I had a chat with Steve Grunner about our thoughts for the Norcemog 2020 Scenic Run. Steve had some great ideas, and he and Viv suggested that they drive the proposed route while we were away so we could get a running start on my return.

Now we are half way round the World and how things change..... It's five weeks later and we are both confined to Barracks. Steve is in semi-solitary at home with Viv, and Francesca and I are in lock-down in New Zealand. Hopefully my Morgan is safely locked in the garage. Anyhow, this has given me a lot of time to muse about the ultimate Scenic Run, and I have had a brain wave. How about a Scenic Run in NEW ZEALAND!!!!

So with only three and a half weeks experience of touring in NZ, mostly in the North Island, I have decided to take a uneducated view of the problems and opportunities of a **Norcemog New Zealand Scenic Run**.

There certainly are some definite benefits to us NorceMoggers

Few motorways - You don't have to drive on the M6 or M61 to join in the fun.

Clearer roads - There's no one on the Roads.

- New Zealand has 10% more land area than the UK and the population is 4.8 million people compared to 66 million in the UK
- There are 3.9m vehicles in New Zealand (a good proportion of which are tractors), versus 38.2 million in the UK.

Potholes - There are an estimated 80% fewer potholes in NZ than in the UK.

Climate - Christchurch is 10 degrees closer to the equator than Manchester, on a line of latitude equivalent to that running through the Mediterranean Sea.

Language - A Brit can just about communicate with a Kiwi, as long as you substitute “E” for and “A” and an “I” for and “E” when you're listening, and when talking your voice must go up the best part of an octave for the last vowel in every sentence. Overall, your lower jaw must be stationary at all time; try it!

But, as those NorceMoggers who have been to NZ will know, there are some hidden downsides.

Distance - It's a bl**dy long way away!

- The flight is around 34 hours door to door including a 3 hour transfer. We didn't suffer too badly with jet lag, but alcohol and drugs (Melatonin) helped.
- To ship a Morgan costs c £2,000 and takes a couple of months.

Road Maps – A road map does not appear to be a priority to a Kiwi. They know the major routes around each island and once you get close to a destination there is generally only one route to get there, “Simples”!

But for the Norcemogger maps or local knowledge is essential, as having road map may provide an important clue to the road surface.

Roads Surface – there are 3 basic types of road surface asphalt, unsealed and mixed.

The asphalt roads are generally excellent. There are sections which have a touch of “Chassis Deforme”, as our French friends would put it, and a few ripples in the surface; otherwise it’s smooth driving mile after mile. But at some stage you will turn onto the dreaded unsealed or mixed surfaced road.

When it is dry the unsealed surface is dusty and stone covered providing a machine gun accompaniment to the drive. When it is wet the surface becomes pre-set concrete!

Mixed surface roads occur on winding or unstable roads and are very, very sneaky! You arrive 20 metres before a sharp bend and find the surface changes to from unsealed to asphalt, what a relief! Then 20 metres round the bend machine gun starts again as the road reverts to its original bead blasting unsealed surface. An this goes on for miles.....so frustrating.

Now for a bit of history – with a fair dollop of artistic licence!

Europeans arrived in New Zealand some 200 years ago. They brought horses and built carts to get to and from their farmsteads. In the absence of footpaths and bridleways to follow, roads in the valleys and plains were built straight and true. This was until the road builders recognised that, either they were going in the wrong direction or, the ground was unsuitable. At such a point a sharp turn was made in the road and off they went again. This is an excellent way to keep today’s driver awake on a warm afternoon but, on the other hand, it does allow you to reach the national maximum 100kph on the “open road”.

But New Zealand also has Mountains, with a “spine” down the South Island and a range parallel to the South East Coast of the North Island.

The technique for road building across the mountains appears to be “follow the steepest route negotiable by man and horse and, if you can’t go straight up, zig zag”! There is non of this namby-pamby European construction of sticking four lanes of concrete to a mountain, or putting a road on 245 metre pillars across a valley. The Kiwis just follow the horse track then dig about 25 feet sideways into the mountain, they throw on some asphalt (if you’re lucky) and hope the road doesn’t slip down to the valley below.

Note: Crossing Takaka “Hill” (which is over half the size if Ben Nevis) we had a 14 minute wait to negotiate 2 miles of single track road because one of the carriageways had fallen off the “Hill” after heavy rain. Cesca was not comforted by the single track arrangement. But putting things into perspective, it is generally the case that the “Nanny State” has not yet arrived in New Zealand. Steps are steeper. Where you would see Armco barriers along a UK road, in NZ you see white wooden sticks with an orange top (if you’re lucky), and of course they invented the “sport” of throwing people off bridges tied to knicker elastic. It all make sense in a strange way!

Ramps and Bumps – Road builders in NZ appear to believe that the domestic vehicle population is confined to SUVs, small trucks and tractors (the domestic transport of choice for farmers). So for saloon or sports car owners NZ speed bumps and ramps are very fierce and certainly bite back.

There are a lot of short ferry crossings in NZ, often to avoid a lengthy circumnavigation around an long inlet. Ferry ramps are cunning, if the tide is in they lull you into a false sense of security, with a relatively flat approach on the outward journey, then they offer up a vertical decent onto the deck on your return when the tide has gone out. The low slung Morgan driver (I mean the car, not the driver) must be vigilant for signage and creative in their approach to such obstacles. At all costs it is important to avoid the ultimate sin, in this environmentally paranoid country, of grounding the sump and dumping one’s engine oil into the briny.

Boys in Blue – the New Zealand police force give the impression of being polite but no-nonsense chaps. Francesca and I have shared a smug grin seeing a few reprobates stopped at the roadside, and I have only had one run-in with the “fuzz” myself. Whoops, now the cat’s out of the bag, I’d better explain.

Its Friday night in Ohakune, and the small ski resort is hosting the Harley Davidson annual weekend get together. You

know, the one where middle aged otherwise respectable people, who can finally afford the bike of their dreams, pretend they're Peter Fonda and Karen Black in Easy Rider. Similar to any self-respecting Morgan owner, they enjoy driving round in groups and lining up their vehicles outside a café so they gaze on them with parental pride.

Anyhow, we had finished supper and I had enjoyed a beer, just the one and not even a full pint. On the way back I thought we would check out another restaurant for the next day, which we quickly realised was just outside the main venue for our biker friends. As I turned the next corner we saw a sea of twinkling lights, and 2 minutes later one of Ohakune's finest was asking me to blow into a tube. He was very polite, and confirmed I was under the limit, he even let me keep the disposable plastic tube I'd blown into as a memento! Note to self: in order to avoid a massive increase coronary remember to check the drink driving limits in a county before you venture out....derrrrr!

And finally Campervans (and Motorhomes) - Why do so many tourists choose to travel in a campervan or motor home? I understand that some people enjoy living in a slightly underpowered box on wheels which is near impossible to park in a marked space at the supermarket, and in which every 2-3 days you have to search out the most unsavoury party of town to find a "Dump Station" to empty the "how's-your-father"! But imagine driving in a country where 99.5% of the roads are single carriageway and there are 30,000 Campervans to negotiate. Whilst there aren't many vehicles to overtake, there's a good chance it will be a Campervan tootling along at 50kph trying to find a lay-bye, campsite or "Dump Station", just as you reach the hairpin road up the mountain. Stay calm!

So what's the verdict?

Despite these downsides there is one feature of New Zealand that makes it perfect for a Scenic Run; that is, of course, THE SCENERY.

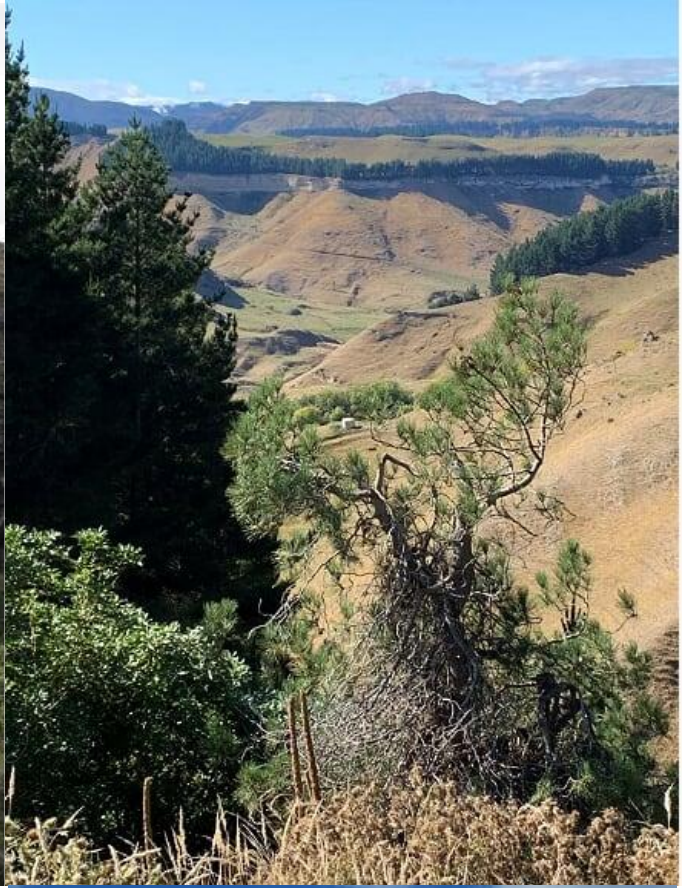
Breath taking views are a feature of every drive outside the cities. Rolling hills suddenly become serious mountains with sheer rock faces and a thousand year old forest cover. There are lakes that look like seas and sea that looks like lakes. The temperate to semi-tropical marine climate combines strong sun with sufficient rain to create every shade of green in the spectrum. Whilst water doesn't have any colour, in New Zealand it has every colour, vivid blues, exotic greens and intimidating greys. It all adds to the drama.

We have been entranced by what we have seen so far, from the Bay of Islands to Golden Bay and from the Mount Ruapehu to the Hobbit caves at Matamata. Driving is challenging and fun, and the people are welcoming, if a little reserved, compared to their neighbours across the Tasman Sea.

So, if anyone fancies organising a Scenic Run in New Zealand please let me know. In the meantime Steve and I will focus on the Ribble Valley or Forest of Bowland for who knows when in the future.

Well it's time for Francesca and me to go for our daily constitutional, just need to load up the hand sanitiser & "sunnies" and decide if it is the local park or Auckland waterfront. Take care, and we'll see you when we can find our way home.

Neil & Francesca.



Picture 1 – Whackapapa Waterfall
Picture 2 – Moawhango
Picture 3 – Pelorus Sound
Picture 4 – Pelorus Valley

All Morgans Day 2020 at Blenheim Invitation

We are writing today, on behalf of the MSCC travel club, with regards to the up and coming MOGFEST event. **The MSCC Travel Club**, operated by Scenic Car Tours, and the Morgan Sports Car Club, have today agreed to postpone MOGFEST.

Although the official government advice means the event can **currently** run as planned, we appreciate that in these uncertain times, it is to everyone's benefit, to be pro-active rather than re-active, and so have all agreed the new date for the event to be Friday 25th and Saturday 26th September 2020. This 4-month delay gives us all what we hope will be sufficient time for the current situation to calm, and also give everyone due to travel to MOGFEST the peace of mind that they will not have a difficult decision to make as to whether to attend the event in June.

All Morgan's Day at Blenheim palace has always been a separate event, however we appreciate lots of you may have booked tickets for this event, it is currently not known this event will still go ahead in June. We have asked the R100 Team to explore if this event can be moved to coincide with our new MOGFEST date. And I am sure they will be communicating the progress on this in the very near future.

So what do you need to do next regarding MOGFEST:-

1- If you can attend the event on the revised dates, you do not have to do anything, your booking will be automatically moved to the revised date exactly as it was. For example, if you had a booking for Thursday 4th – Sunday 7th June, your booking will be moved to Thursday 24th – Sunday 27th September 2020.

2- If you cannot make the new event, your funds paid to date will be carried forward in the form of a voucher, which you will be able to use towards any future MSCC Travel club tour or event, or any Scenic Car Tours event or tour, at any point in the future. If you need to use this option, please email Scenic Car Tours on admin@sceniccartours.com.

As we are sure you can appreciate, this is an unprecedented time for everyone, especially the travel industry, so **if you can please only contact Scenic Car Tours if you cannot make the revised event dates, that would be much appreciated.**

We know from speaking to members on the phone in the past few weeks this news will come as a great relief to those worried about travelling in June, and many thanks to all of you for your understanding and patience during this time.

We continue to put our Customers first.

With best regards,

Bob Cole

MSCC Travel Club Coordinator

Telephone: +44 1732 879153

14 New Hythe Lane · Larkfield · Aylesford · Kent · ME20 6AB · UK
Tel: +44 1732 879153



OFFICIAL TRAVEL CLUB
Operated by Scenic & Continental Car Tours

14 New Hythe Lane • Larkfield • Kent ME20 6AB ☎ 01732 879153
e-mail: admin@sceniccartours.com • www.sceniccartours.com



Scenic Car Tours is a trading name of Albatross Motoring Limited.

Registered in England & Wales. Registered Number: 9000671. Registered Office: 14 New Hythe Lane · Larkfield · Aylesford · Kent · ME20 6AB · UK

Please see note below regarding cancellation of MSCC AGM. All members are encouraged to use their postal votes!

The Morgan Sports Car Club Limited Notice re Annual General Meeting

In view of the current situation with regard to Covid-19 and taking into account the current government advice, as at 19th March 2020, we wish to advise all members that the 2020 AGM will no longer take place so no meeting will be held on the 18th April. The company directors along with the FEGP committee have looked at other options and have taken professional advice including contacting Companies House with regard to the holding of an AGM. No options to hold a meeting were acceptable or practical. We will be taking into account the votes received either through the post or online and will take the votes cast on or by the vote closing date as the will of the members as if a meeting had taken place. The Chairman's Report will still be produced and will be in Miscellany as in past years as will details of the votes cast. The Financial Report and Accounts were sent out with the March Copy of Miscellany. In the meantime we encourage all members to use their postal vote or vote online. For the sake of clarity we would wish to stick to the deadline of 2.00 pm on the 16th April for receipt of those votes. We obviously regret having to make this decision but we are sure you will understand.

Peter Grange

Company Secretary

The Morgan Sports Car Club Limited

And on a lighter note, a few pictures to finish off from the March Noggin





NORCEMOG DIARY OF EVENTS – 2020

N.B. Dates **highlighted** are NorceMog organised events

Items in red to be confirmed / finalised

Easter Monday – April 13th

St Georges Day – April 23rd

April 5th

Given the government advice of 16th March regarding social distancing and non-essential travel, we have decided to cancel the NorceMog AGM scheduled for 5th April 2020 at Vale Royal Abbey.

ALL DATES BELOW ARE SUBJECT TO CHANGE IN LINE WITH GOVERNMENT ADVICE

May 8th This year on Bank Holiday Friday! - Gawsworth Hall Car Show, Macclesfield, SK11 9RN

- Click here for [Details](#)

Download an [ENTRY FORM HERE](#)

Contact – Martin Cocks – 07973 488504, martincocks@btinternet.com

May 10th

Windermere Jetty, A Museum of Boats, Steam and Stories. Click here for [Details](#)

Contact – Chris & Ann Harfield – email chrisharfield@lycos.com

May 12 - 15th

NorceMog Spring Tour, The Fat Lamb Inn, Ravenstonedale, CA17 4LL

Click here for [Details](#)

Contact – Adrian & Dot Long – 07831 377255, Adrian.long@icloud.com

May 30th VSCC Vintage Sports Car Festival @ Oulton Park

May 23 – 25th Chipping Steam Fair – Entry is free of charge if you 'exhibit' your Morgan.
Applications preferred by December 2019!

Click here for [Details](#)

June 14th Autotest & Concours - British Commercial Vehicle Museum, Leyland, PR25 2LE
Click here for [Details](#)
Contact - Bryan Rawlinson - Tel 01995 604716

June 28th Arley Hall Garden Festival - **10 Cars Max**
Click Here for [Details](#)
Contact – Andrew Threlkeld – norcemog@gmail.com

July 12th Scenic Run
Contact – Neil McArthur – neillmcarthur@hotmail.com

July 29th Nantwich Show & Cheese Festival – The biggest cheese show in the world!
Click here for Details
Contact – Jay Hale - Jay@company-strategy.co.uk

Jul 31st -Aug 2nd Silverstone Classic

August 9th TBD
Contact – Andrew Threlkeld, norcemog@gmail.com

Aug 29 – 31st Oulton Park Gold Cup – 3 day race week-end - Click Here for [Details](#)
Contact – Andrew Threlkeld norcemog@gmail.com

Sep 4th- 6th Morgans @ Windermere – organised by FellMog

Sep 13th Gymkhana - Farmer Parr's Animal World, Fleetwood FY7 8SL
Click Here for [Details](#) -
Contact – Bryan Fearn, Email- bryanfearn@hotmail.co.uk

Sep 20th Madresfield Gymkhana, Madresfield Court Estate, Malvern, WR13 5AH
Organised by MSCC Midland Centre - Click Here for [Details](#)
Contact – Martin Wyatt, Tel: 07831248981
Email: midland.sec@morgansportscarclub.com

Oct 11th TBD
Contact – Isobel & Peter Moore, EMAIL - ISOBELPETER@GMAIL.COM

Oct 18th Autumn Trial run by Chester Vintage Enthusiasts Car Club.
Fishpool Farm, Fishpool Rd, Delamere, CW8 2HP.
Click Here for [Details](#)

Nov 15th TBD

Dec 13th Christmas Party and Annual Awards Presentation
The Barton Grange Hotel, PR3 5AA
Click Here for [Details](#)
Contact – Bryan & Linda Fearn – bryanfearn@hotmail.co.uk